

Update on G3 Terminal Vancouver

Construction of a modern and highly efficient Export Grain Terminal at Lynnterm West Gate, North Vancouver

May 2017

Construction Update

Construction has been underway at our North Vancouver G3 Terminal Vancouver site at Lynnterm West Gate since March 7, 2017, after we successfully completed an extensive project and environmental review and permitting process with the Vancouver Fraser Port Authority. Peter Kiewit Sons ULC has been selected as our design-build construction contractor for the project. They have extensive experience and success building large scale projects in British Columbia, including the Port Mann Bridge and the Sea to Sky Highway.

From March to present, our construction activities have included the demolition of old buildings/structures, site clean-up, relocating underground utilities, digging foundations, and dock panel removal (involving no in water works). We will manage dust on site using water trucks and expect minimal traffic impacts in the non-industrial area during this time.

We will conduct most construction activities from Monday to Saturday between 7:00 am and 8:00 pm. If we need to conduct construction outside these hours we will require authorization from the Vancouver Fraser Port Authority and we will notify you by email ahead of any extended work hours.

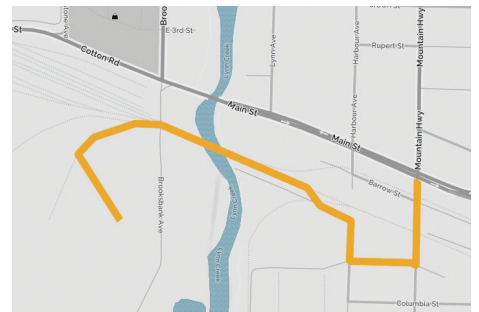


What's coming up - June to August

Industrial traffic requiring access to Lynnterm West Gate will be rerouted to a temporary detour starting in June this year. The temporary detour will be on the east side of Lynn Creek accessed via Mountain Highway, Dominion road and Harbour avenue, then along a temporary road built over the rail line and bridge to the G3 and Vancouver Pile Driving sites. We will monitor traffic and adjust to minimize traffic disruptions to local businesses located in the industrial area. There will be a small and temporary realignment of access to the Harbourview Dog Park and while we have made considerable efforts to ensure a safe and timely route be maintained to the parking lot, we suggest that dog owners may wish to access the park via the trail via access points to the north. We apologize for the inconvenience and will be working quickly to install the new roadway safely, and with as little impact as possible.

Later this summer, we plan to begin marine and land pile work including pile driving 90 metres (300 ft.) south of the existing berth face to support up to three ship-loading cranes. Noise levels generated on site will remain below the construction noise limits of both the City of North Vancouver and the District of North Vancouver. To protect the marine environment, we will surround the pile removal area with containment booms, employ a bubble curtain during pile driving to reduce underwater sound levels, and use biodegradable hydraulic fluid in marine machinery. The removal of creosote-treated piles will remove a contaminant of concern for aquatic life.

We will also begin concrete pours of the foundations for several buildings which will involve the erection of a crane and a few days of 24/7 pours as it is a necessity that the work is continuous. We will require authorization from the Vancouver Fraser Port Authority and will notify you by email ahead of any extended work hours.



Industrial traffic detour illustrated by yellow line

*Reducing construction traffic
Since the start of construction, we have barged 30,000 tonnes of aggregate to site, which has reduced traffic impact by 1,200 dump trucks.*

Protecting Lynn Creek

As our site is next door to Lynn Creek and the Lynn Creek estuary, we will protect the riparian area by preventing sediment laden run-off water using good industry practices and working at safe distances from the vegetative buffer. We will ensure water being discharged into Lynn Creek meets the BC Water Quality guidelines for the protection of aquatic life. We are also working with the BC Ministry of Forest, Lands, and Natural Resource Operations on water extraction permitting for site construction dewatering and we will be taking the necessary steps to protect Lynn Creek during its low flow periods.

Community Initiatives/Updates

G3 is exploring initiatives to enhance vegetation in the areas adjacent to G3's project. Initial meetings with the City of North Vancouver are planned for this month. Please look for an update in our next community update on our progress to add more native trees and greenery to the areas around our project site.

Keeping in touch

We asked for feedback on how the local community would like to keep in touch during construction, and we overwhelmingly heard that email and web updates are the preferred methods to stay up-to-date. We plan to send regular updates like this one on the status of construction, upcoming activities, and our planned community initiatives. We will also send shorter email alerts about other expected impacts related to traffic, extended working hours or restricted access around the site. During construction, we want to ensure you know how to reach us if you have questions or concerns. Please feel free to contact us any time at:

Email:
info@g3terminalvancouver.ca

Phone:
General Inquiries, 1-844-263-2398
Construction Inquiries, 778-373-3150

Website:
www.g3terminalvancouver.ca

About G3 Terminal Vancouver

G3 is building a state-of-the-art grain export terminal at Lynnterm West Gate in North Vancouver, British Columbia, the first new grain terminal constructed at the Port of Vancouver since the 1960s. The terminal has been designed to optimize grain receiving, storage, and shipping on Canada's west coast, providing the means for Canadian farmers and marketers to stay globally competitive by helping our agricultural products reach world markets. The types of products that will be handled at the terminal will include wheat, soybeans, canola, peas, corn and specialty agri-products.
